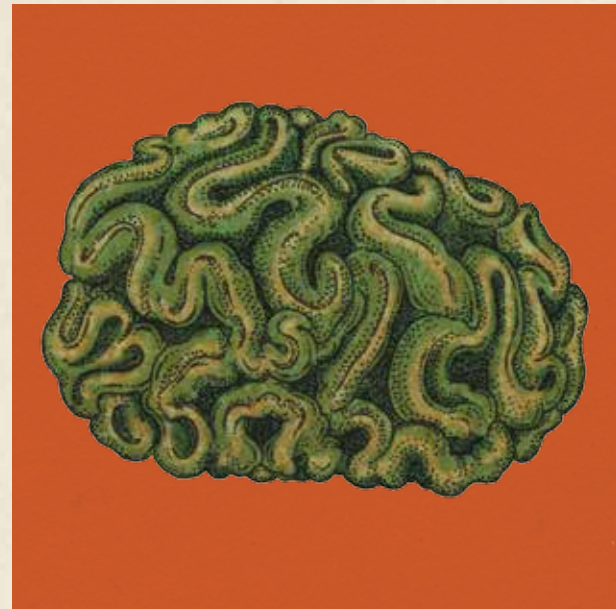


Add more frogs
to this rainforest habitat



Match the animal pairs

(there are invertebrates, amphibians and birds)



How to draw a lion

1



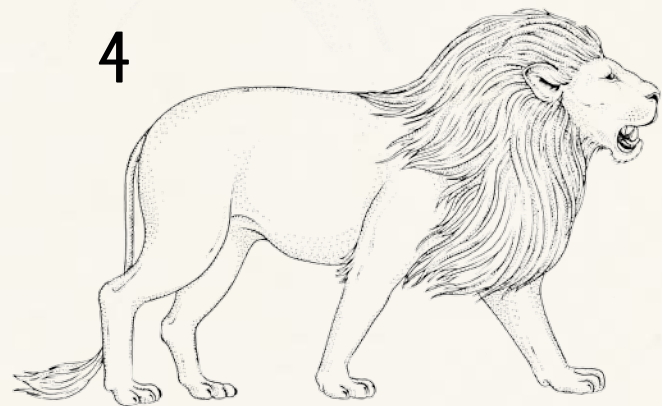
2



3



4

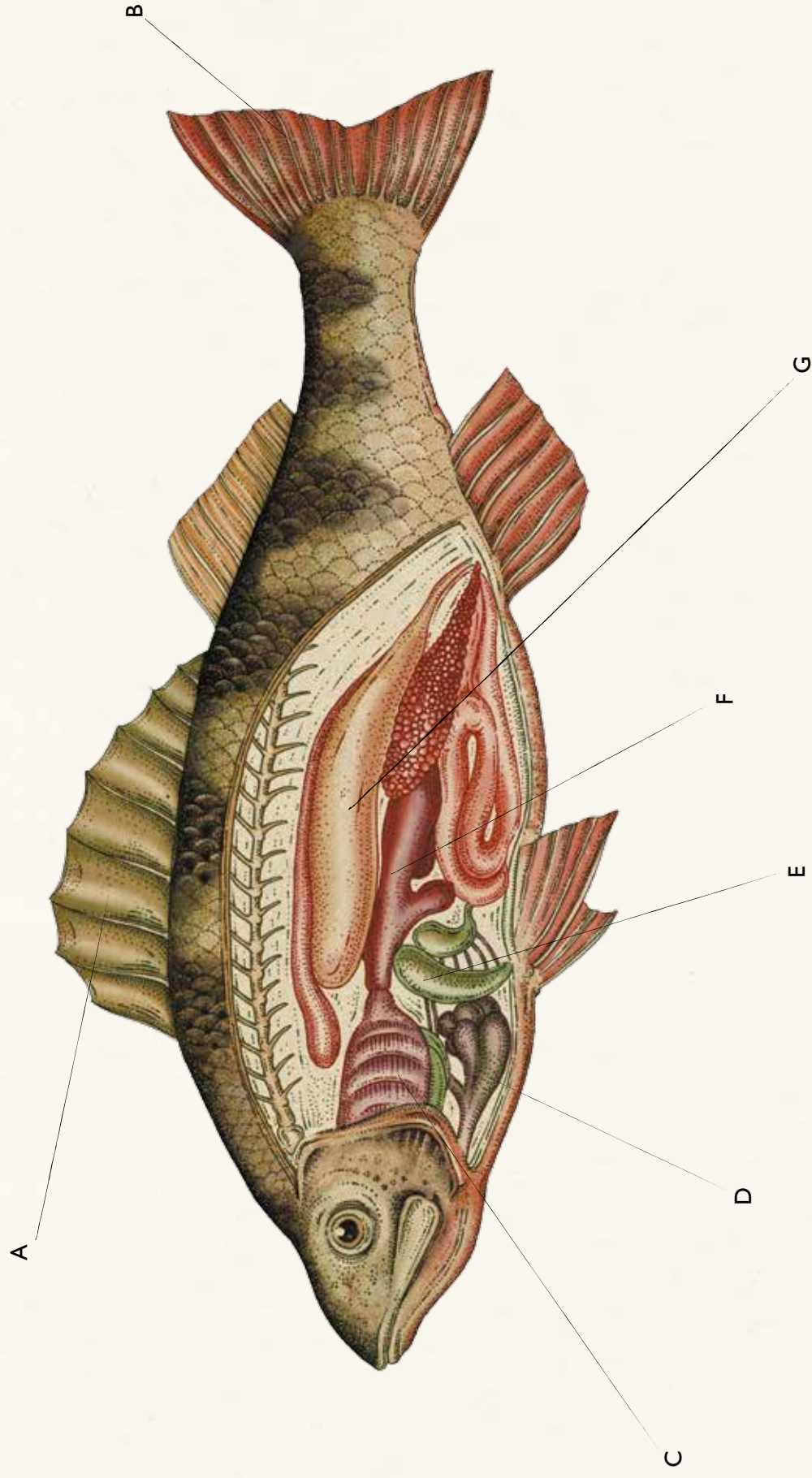


Try it yourself

Add animals to
this coastal habitat



Label the parts of the fish



Liver

Caudal fin

Gills

Air bladder

Spiny dorsal fin

Heart

Stomach

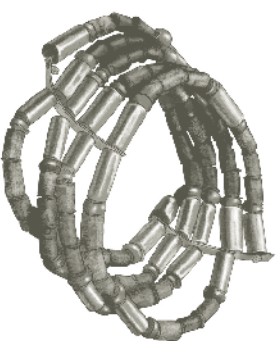
Answers



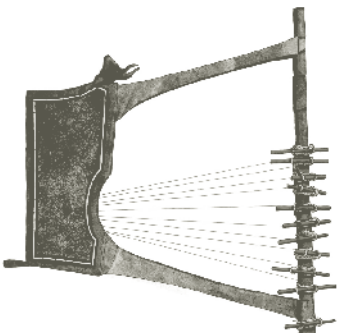
Silver-inlaid axehead
– this belonged to a warrior
Tenth century AD
Europe – The Vikings



Mosaic ceremonial knife
– this probably belonged to an Aztec priest
Fifteenth–sixteenth century AD
America – The Aztecs

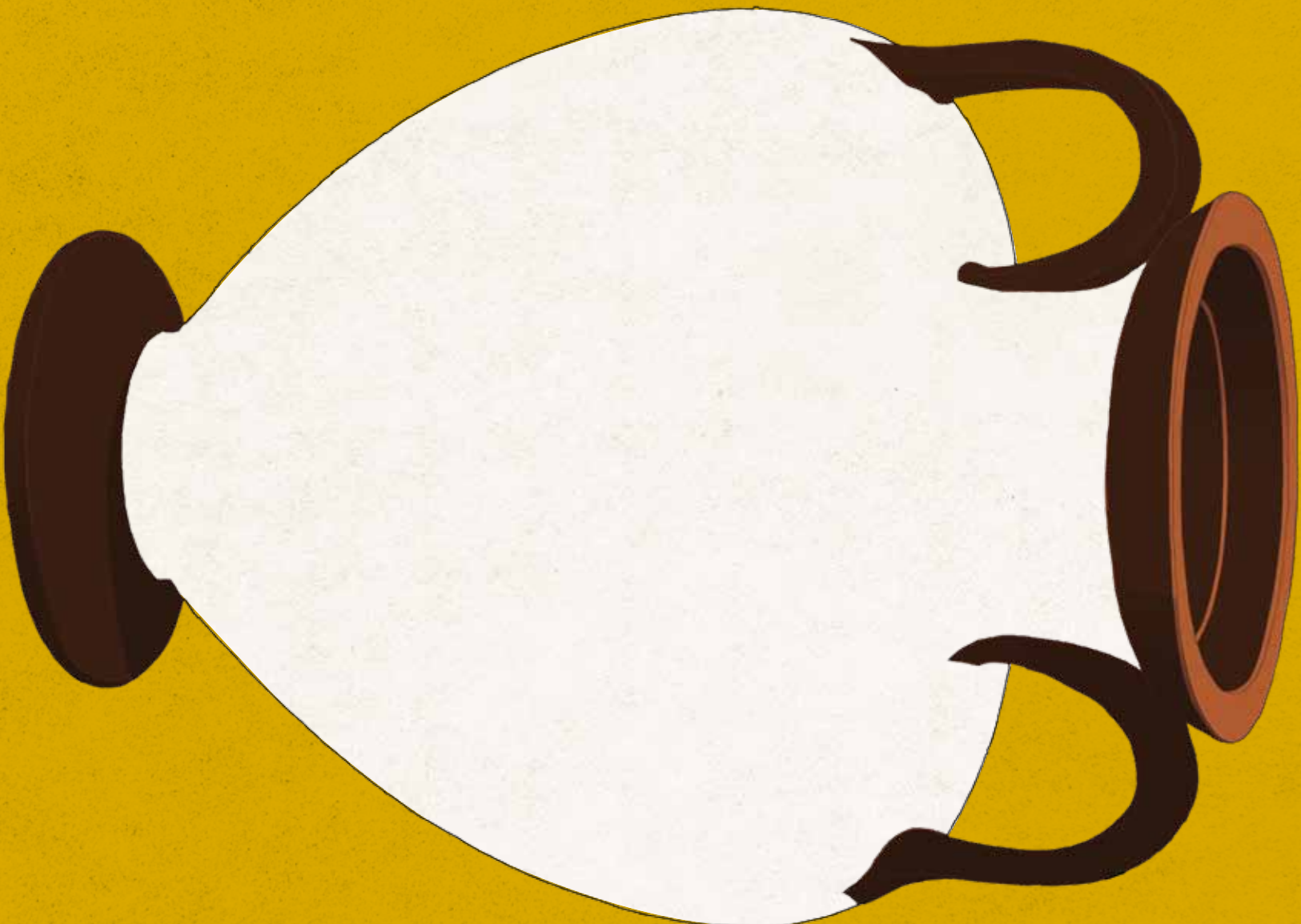


Royal cemetery, Ur: cuff beads
– these belonged to a female member
of royalty, possibly a queen
2600–2400 BC
The Middle East – Mesopotamia



Royal cemetery, Ur: silver lyre
– this belonged to a musician
2600–2400 BC
The Middle East – Mesopotamia

Create your own story
on this Greek vase





Black-figured amphora
Around 530–520 BC
Europe – Ancient Greece

The painting on this wine jar shows a scene from Homer's epic poem, the *Iliad*, where the warrior hero Achilles kills the Amazon queen, Penthesilea.

Find a way through the maze
to the face at its centre



Answer

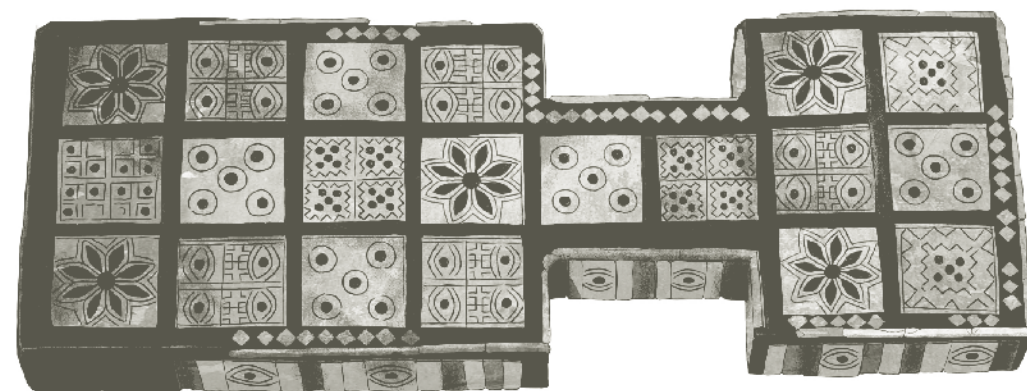


Sun stone
AD 1250–1521
America – The Aztecs

This intricately carved sun stone was once part of a temple complex in Tenochtitlán. It is also known as a calendar stone, because it features the 20 Aztec day names that formed the basis of their sacred calendar.

Circle the coins from Ancient Rome





Royal cemetery, Ur: board game

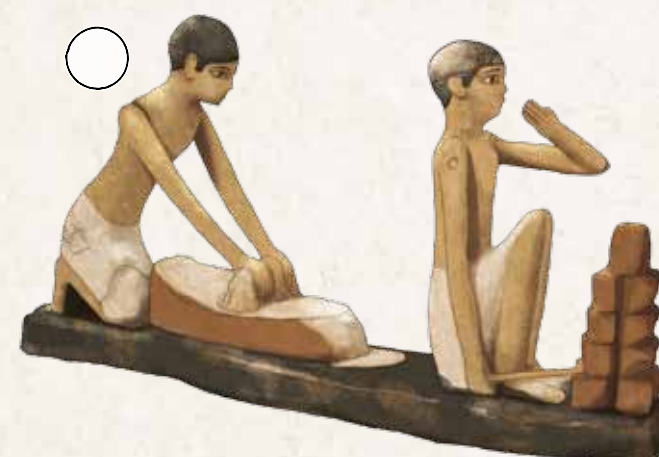
Around 2600–2400 BC

The Middle East – Mesopotamia

Examples of board games with 20 squares have been found from the eastern Mediterranean and Egypt across to India and date from 3000 BC to the first millennium AD.

Number these figurines according to their age

1 being the oldest and 8 the most recent



1. 2500 BC

2. 1900 BC

3. 1500 BC

4. 900–500 BC

5. 100 BC–AD 400

6. 500 AD

7. 1400 AD

8. 1700–1800 AD

Answers



1. Around 2500 BC: **Indus dancing girl**, Asia – Ancient India
2. Around 1900 BC: **Wooden model of bakers**, Africa – Ancient Egypt
3. Around 1500 BC: **Statue of Idrimi**, The Middle East – The Ancient Levant
4. 900–500 BC: **Seated female figurine**, America – The Olmec
5. 100 BC–AD 400: **The Wray Figurine**, America – The Hopewell
6. Around 500 AD: **Kofun tomb figure**, Asia – Ancient Japan
7. Around 1400 AD: **Great Zimbabwe soapstone figure**, Southern Africa
8. 1700–1800 AD: **God figure A'a**, *Austral Islands*, Oceania – Polynesia

Colour in this page from the Lindisfarne Gospels

